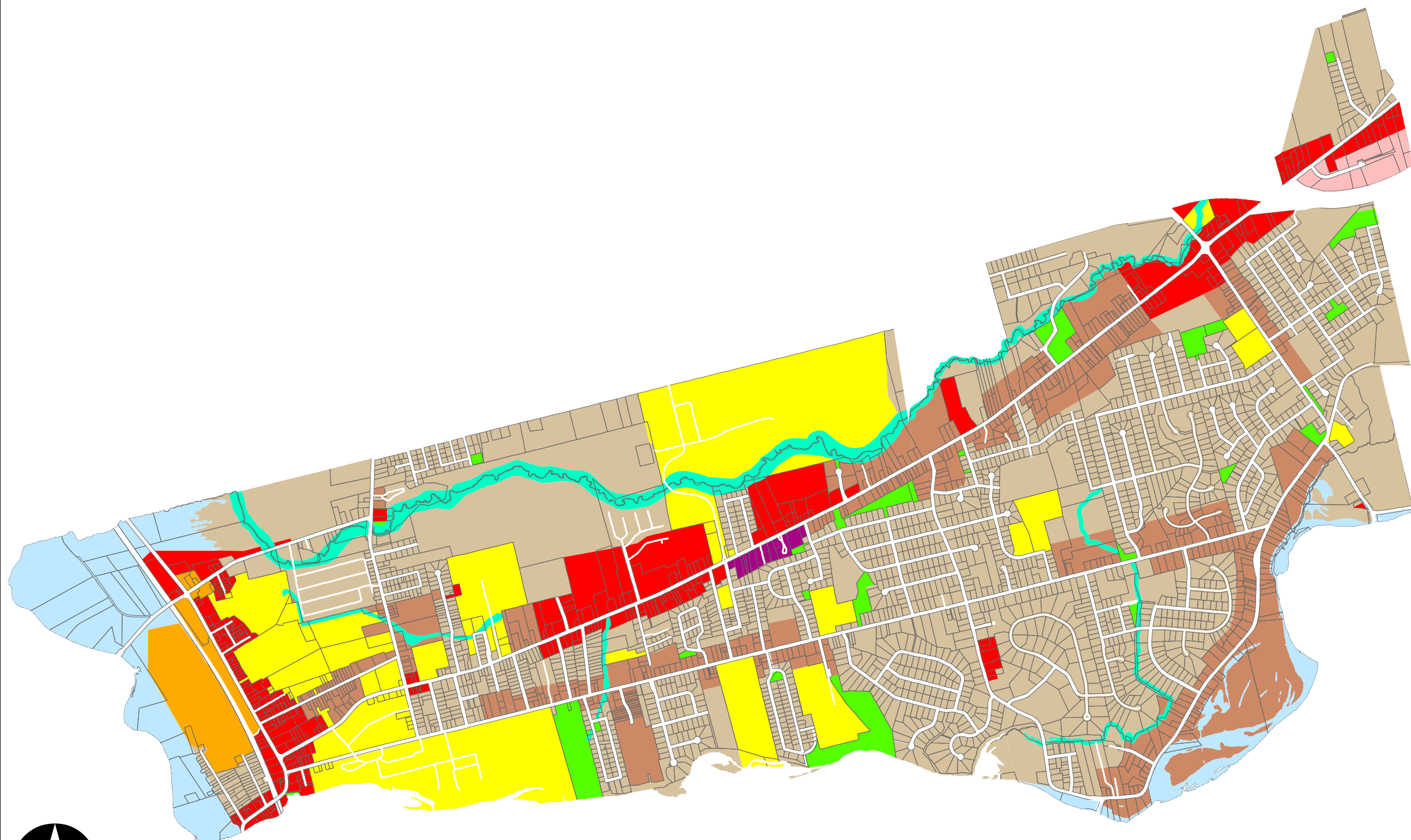


**BIBLE HILL/ VALLEY
FUTURE LAND USE
SCHEDULE 1
MUNICIPAL PLANNING STRATEGY**




Land Use Designations

- Community Commercial (CC)
- Natural Drainage Ways (FE-5)
- Floodway 1:20 Year (F)
- General Commercial (GC)
- Highway Commercial (HC)
- Institutional (I)
- Industrial (M)
- Recreational (P)
- High Density Residential (RH)
- Low Density Residential (RL)

Notes
Property information provided by
Land Information Services of Service Noa Scotia
and Municipal Relations

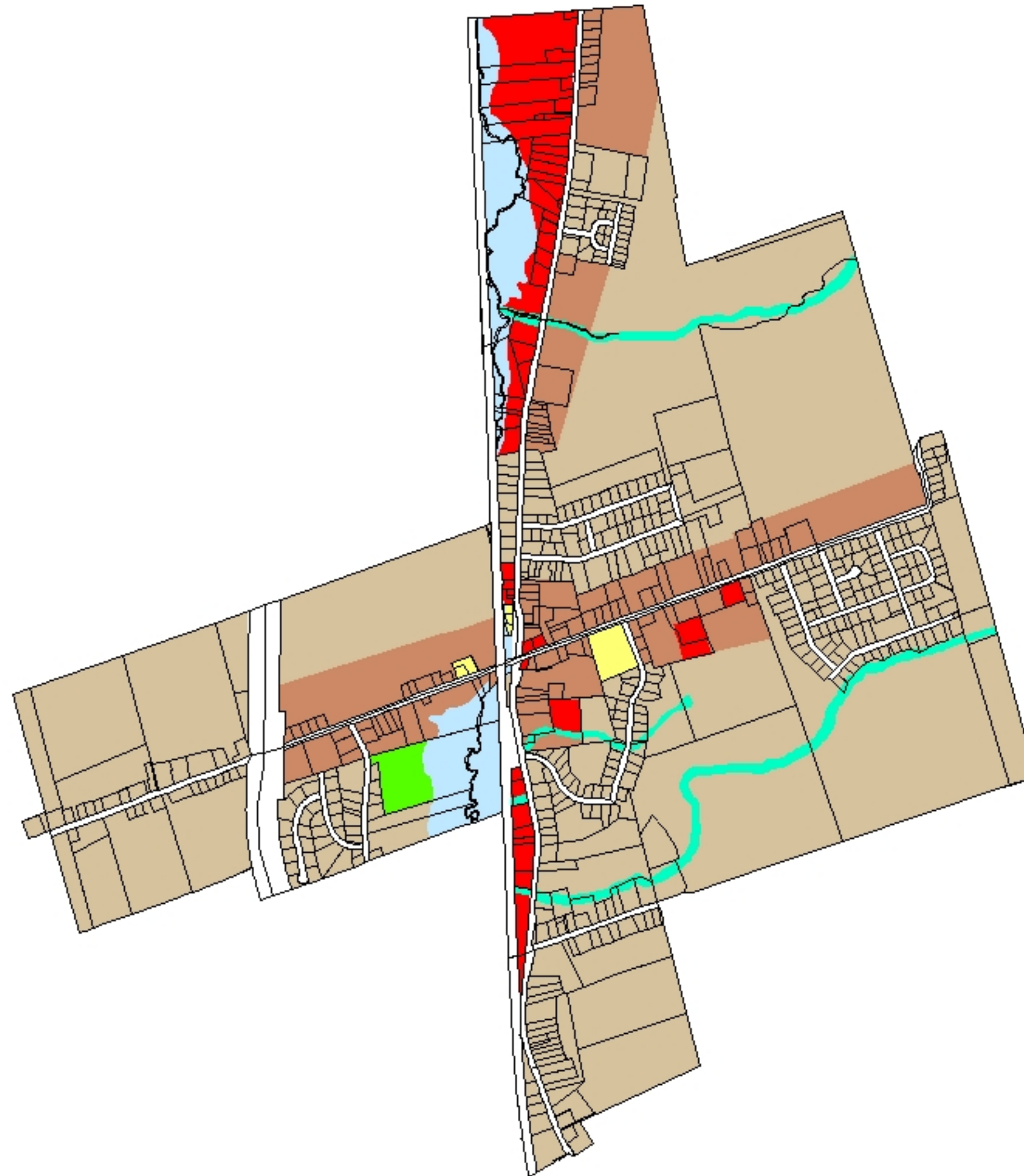
Maps Originally Generated with ArcGIS
March 24, 2003

Current Version updated 2019

 **Municipality of Colchester**
Dept. of Community Development
1 Church Street Truro, Nova Scotia
B2N 3Z5

HILDEN FUTURE LAND USE SCHEDULE 1 Municipal Planning Strategy

0 150 300 600 900 1,200
Meters



Legend

Zoning Designations

- Flood Way 1:20 Year (E-2)
- Natural Drainage Ways (E-5)
- General Commercial (GC)
- Institutional (I)
- Recreational (P)
- High Density Residential (RH)
- Low Density Residential (RL)

Notes

Property Information provided by Land Information Services of Service Nova Scotia & Municipal Relations.
Maps Generated with ArcGis - March 21, 2002

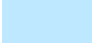









Municipality of Colchester

Department of Community Development
PO Box 697 Truro, Nova Scotia B2N 5E7

SALMON RIVER FUTURE LAND USE SCHEDULE 1 MUNICIPAL PLANNING STRATEGY

Land Use Designations

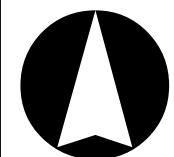
-  Floodway 1:20 Year (F)
-  General Commercial (GC)
-  Institutional (I)
-  Industrial (M)
-  Recreational (P)
-  High Density Residential (RH)
-  Low Density Residential (RL)
-  Rural Fringe (RF)

Notes

Property information provided by
Land Information Services of Service Noa Scotia
and Municipal Relations

Maps Originally Generated with ArcGIS
March 24, 2003

Current Version updated 2017

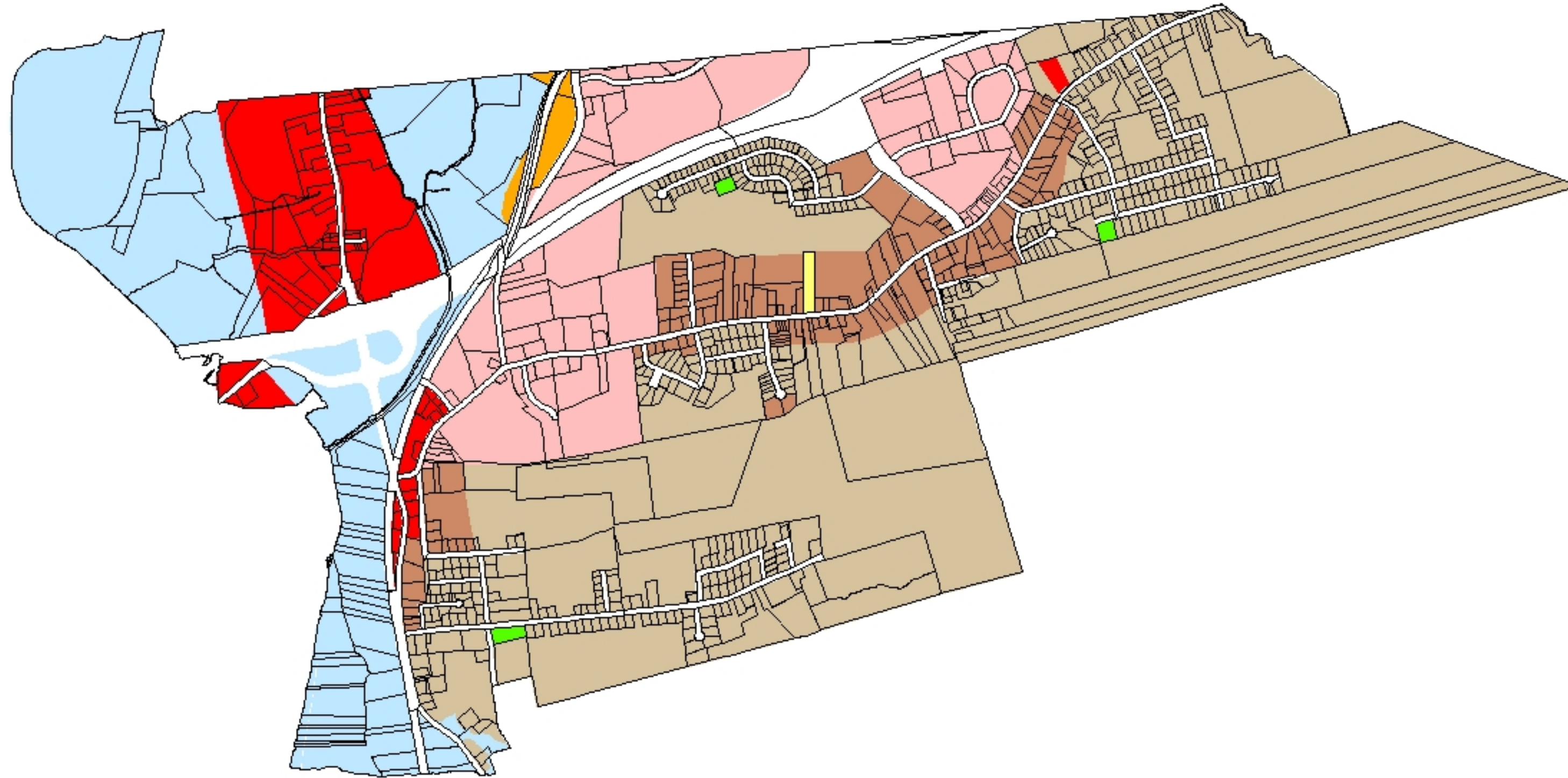


Municipality of Colchester

Dept. of Community Development
1 Church Street Truro, Nova Scotia
B2N 3Z5

TRURO HEIGHTS LOWER TRURO FUTURE LAND USE SCHEDULE 1 Municipal Planning Strategy

0 150 300 600 900
Meters



Legend

Zoning Designations

- Floodway 1:20 Year (F)
- General Commercial (GC)
- Highway Commercial (HC)
- Institutional (I)
- Industrial (M)
- Recreational (P)
- High Density Residential (RH)
- Low Density Residential (RL)

Notes

Property Information provided by Land Information Services of Service Nova Scotia & Municipal Relations.
Maps Generated with ArcGis - March 21, 2002

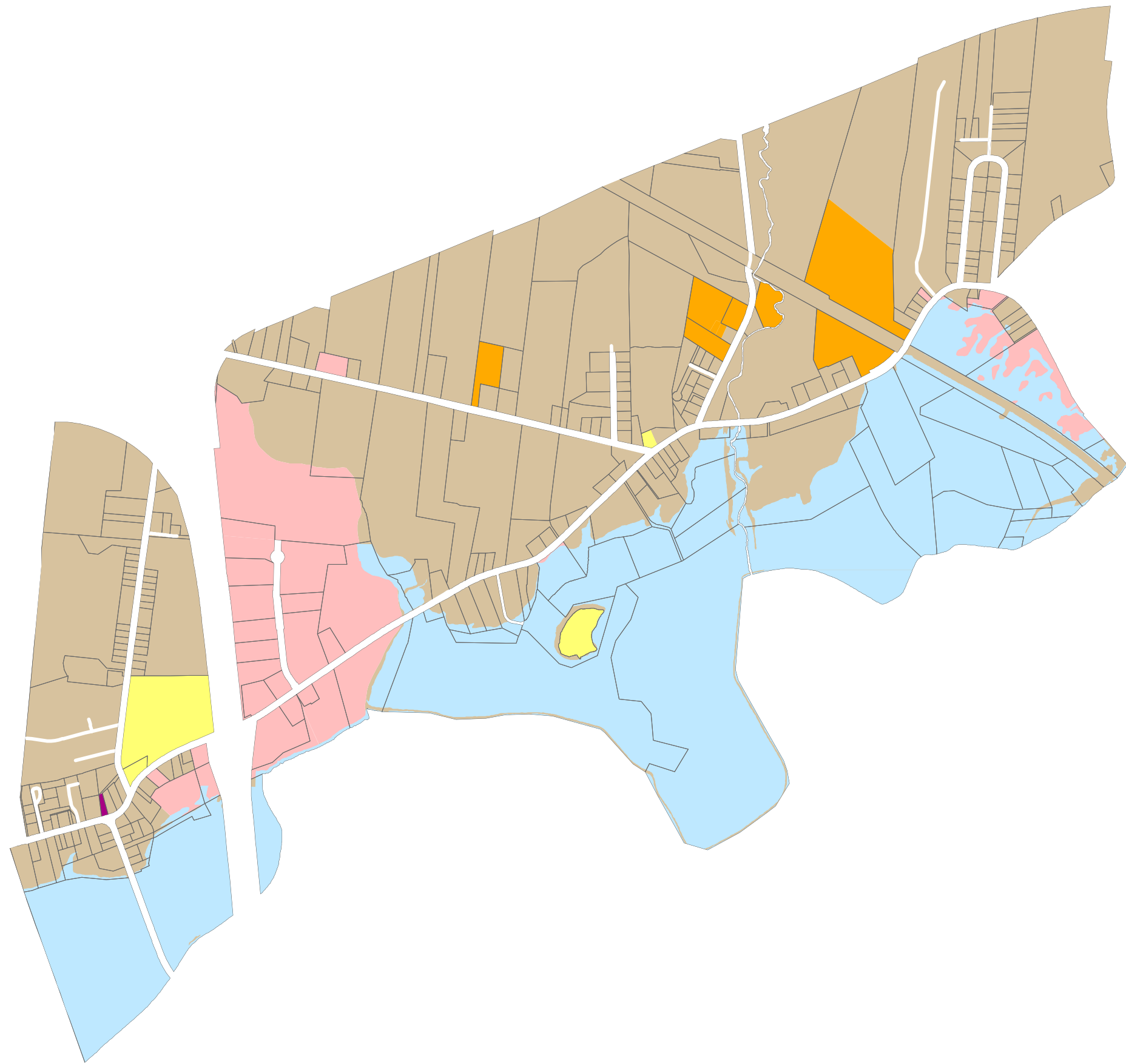


Municipality of Colchester

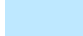





Department of Community Development
PO Box 697 Truro, Nova Scotia B2N 5E7

CENTRAL/ UPPER ONSLOW FUTURE LAND USE

SCHEDULE 1 LAND USE BYLAW



Land Use Designations

-  Floodway 1:20 Year (F)
-  Community Commercial (CC)
-  Highway Commercial (HC)
-  Institutional (I)
-  Industrial (M)
-  Low Density Residential (RL)

Notes

Property information provided by
Land Information Services of Service Nova Scotia
and Municipal Relations

Maps Originally Generated with ArcGIS
March 24, 2003

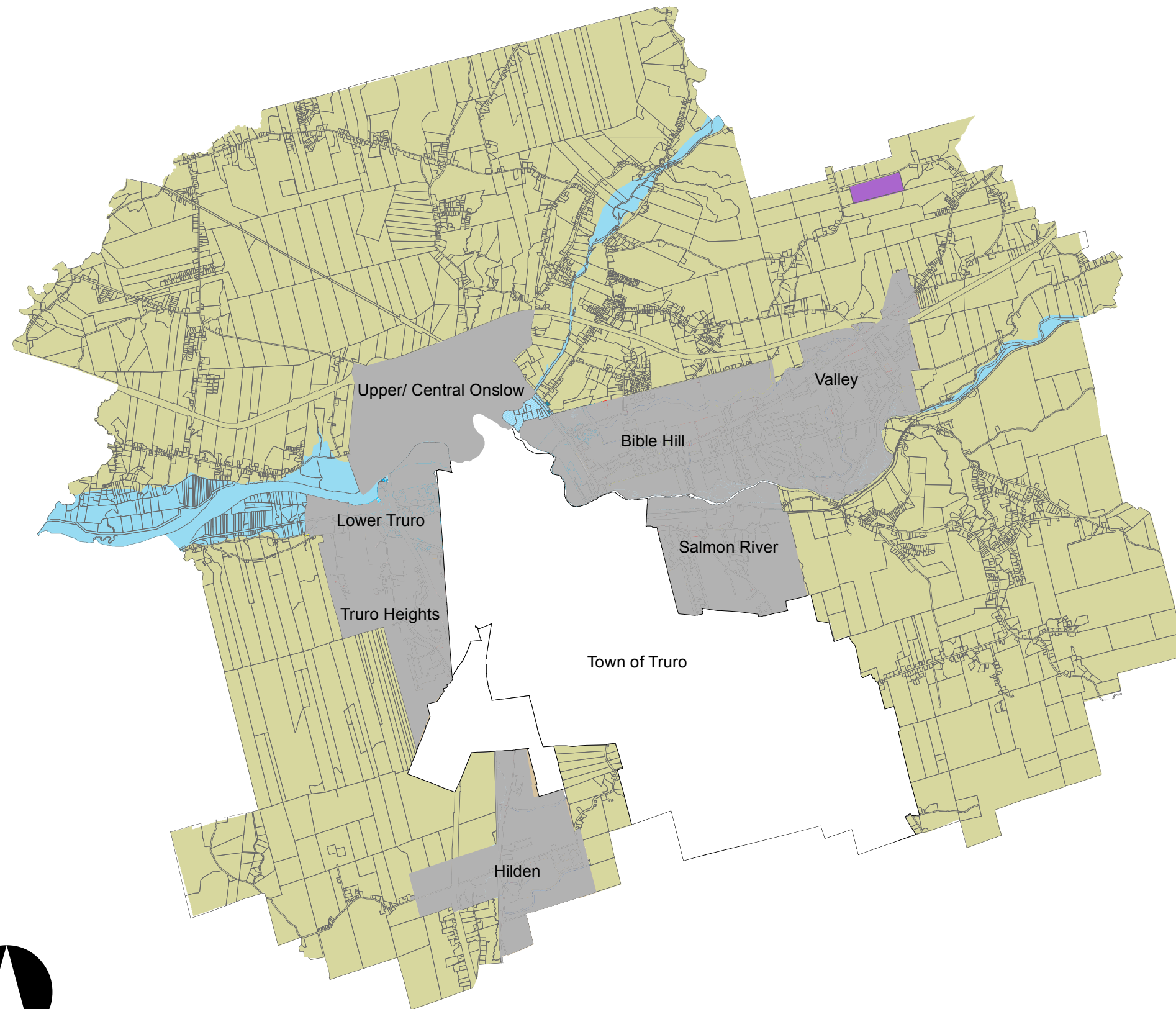
Current Version updated 2015





Municipality of Colchester




Dept. of Community Development
1 Church Street Truro, Nova Scotia
B2N 3Z5

**RURAL FRINGE AREA
FUTURE LAND USE
SCHEDULE 1
MUNICIPAL PLANNING STRATEGY**



-  Town of Truro Boundary
-  Growth Centres

Land Use Designations

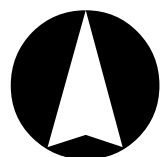
-  RG Flood Way 1:20
-  RG Rural General
-  RM Rural Industrial

Notes

Property information provided by
Land Information Services of Service Noa Scotia
and Municipal Relations

Maps Originally Generated with ArcGIS
March 24, 2003

Current Version updated 2015



Municipality of Colchester

Dept. of Community Development
1 Church Street Truro, Nova Scotia
B2N 3Z5

FUTURE LAND USE CENTRAL COLCHESTER ENVIRONMENTAL CONDITIONS SCHEDULE 2 Municipal Planning Strategy

0 500 1,000 2,000 3,000 Meters

Legend

Flood Risk Areas

- Flood way 1:20 Year
- Flood Fringe 1:100 Year
- Flow Ways

Notes

The Flood Way and Flood Fringe boundaries depicted on this map are intended to correspond with boundaries shown on mapping prepared under the 1988 Canada - Nova Scotia Flood Damage Program unless otherwise altered. References should be made to these maps at the Municipal Office.

