

# TRURO HEIGHTS/ LOWER TRURO ZONING MAP

## SCHEDULE 3 LAND USE BYLAW

### Land Use Designations

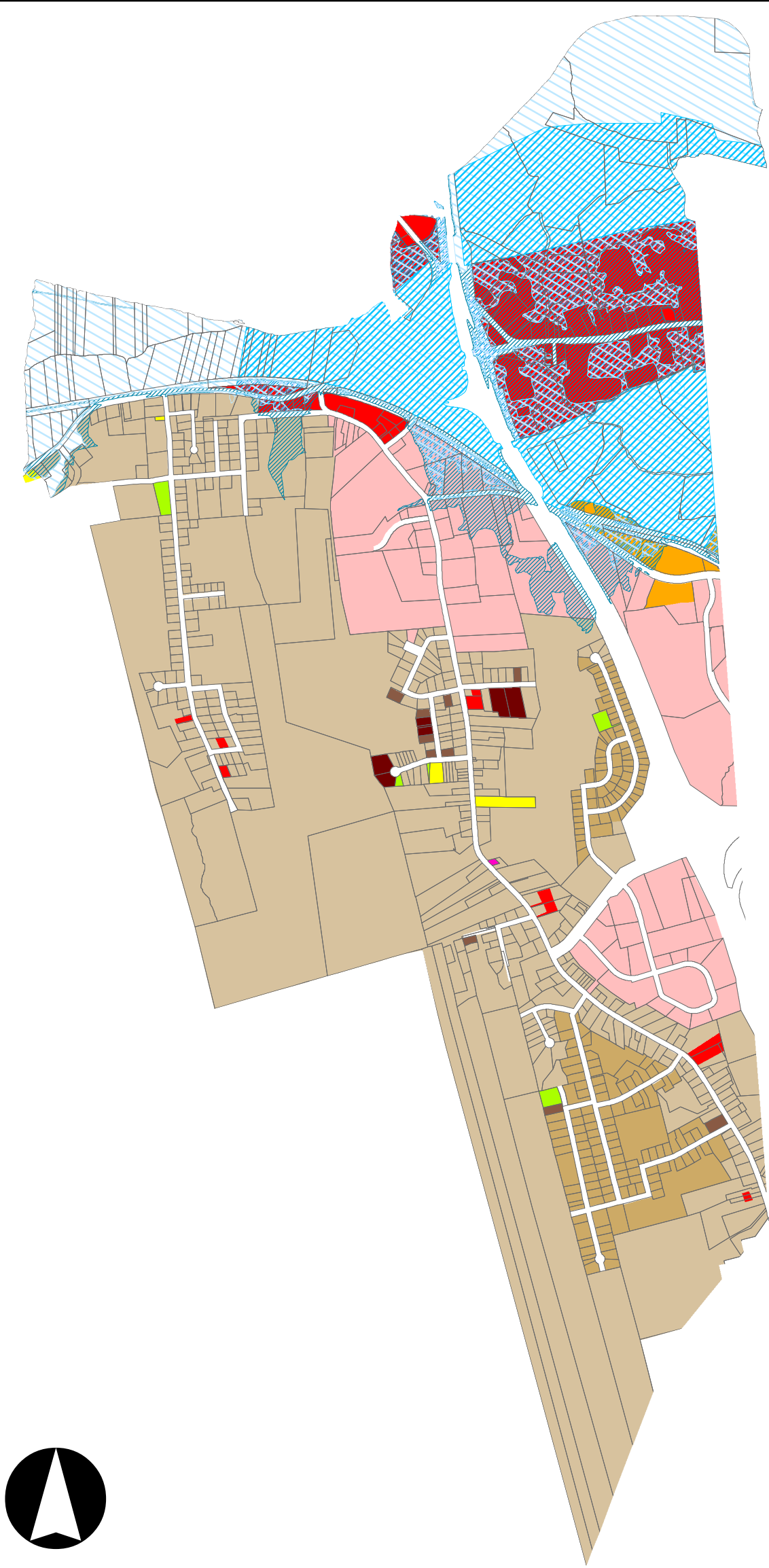
-  C-1 General Commercial
-  C-2 Highway Commercial
-  C-4 Local Commercial
-  E-1 Flood Way
-  E-2 Flood Way 1:20 Year
-  I Institutional
-  M Industrial
-  P Recreation/ Open Space
-  R-2 Double Unit Residential
-  R-2C Residential Double Unit Conversion
-  R-3 Multiple Unit - Medium
-  R-4 Multiple Unit - High

### Notes

Property information provided by  
Land Information Services of Service Nova Scotia  
and Municipal Relations

Maps Originally Generated with ArcGIS  
March 24, 2003

Current Version updated 2019



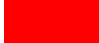










**Municipality of Colchester**

Dept. of Community Development  
1 Church Street Truro, Nova Scotia  
B2N 3Z5

# SALMON RIVER ZONING MAP SCHEDULE 3

## LAND USE BYLAW

### Land Use Designations

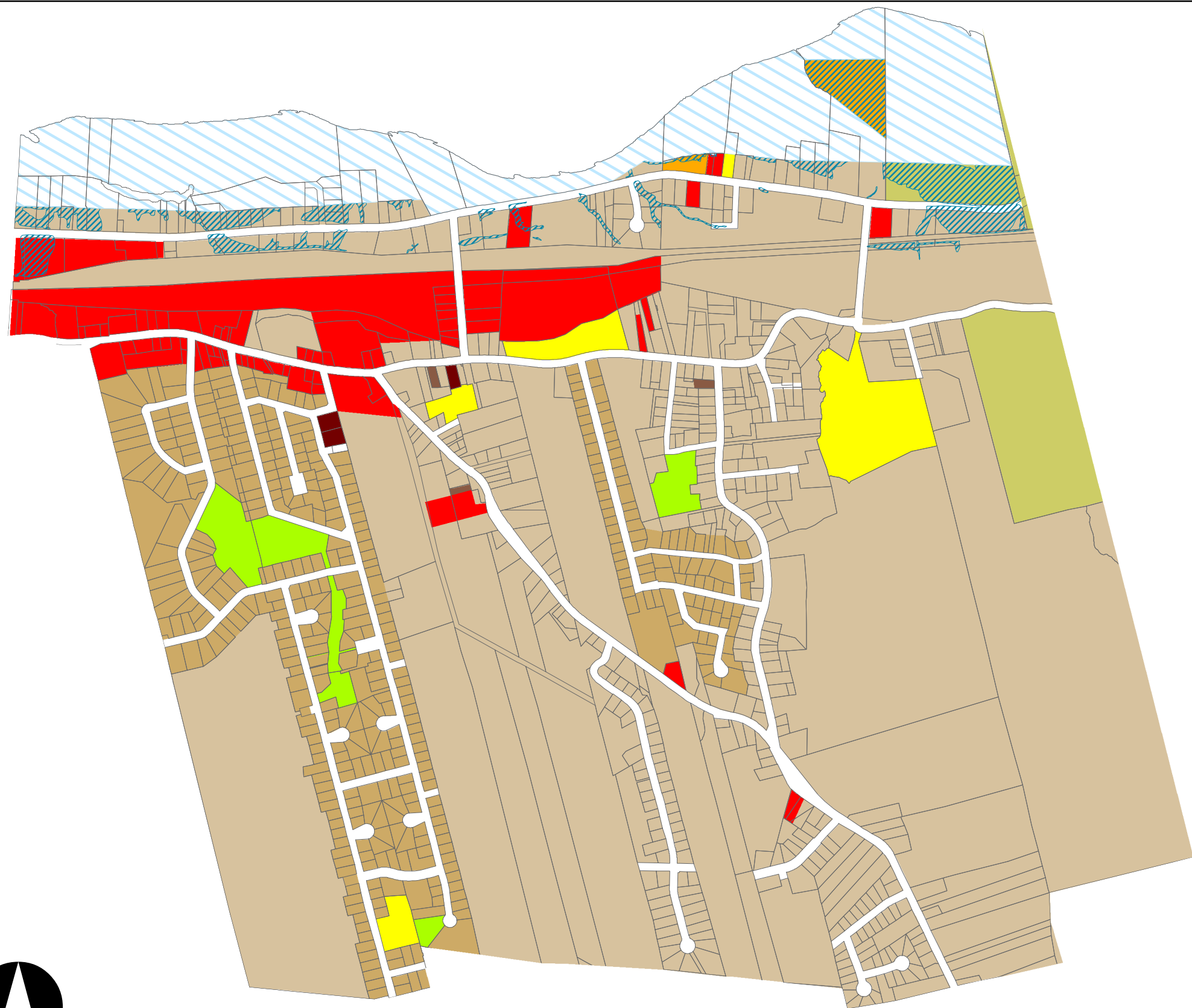
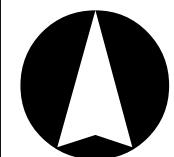
-  C-1 General Commercial
-  C-4 Local Commercial
-  E-2 Flood Way 1:20 Year
-  I Institutional
-  M Industrial
-  P Recreation/ Open Space
-  R-2 Double Unit Residential
-  R-2C Residential Double Unit Conversion
-  R-3 Multiple Unit - Medium
-  R-4 Multiple Unit - High
-  RG Rural General

### Notes

Property information provided by  
Land Information Services of Service Noa Scotia  
and Municipal Relations

Maps Originally Generated with ArcGIS  
March 24, 2003

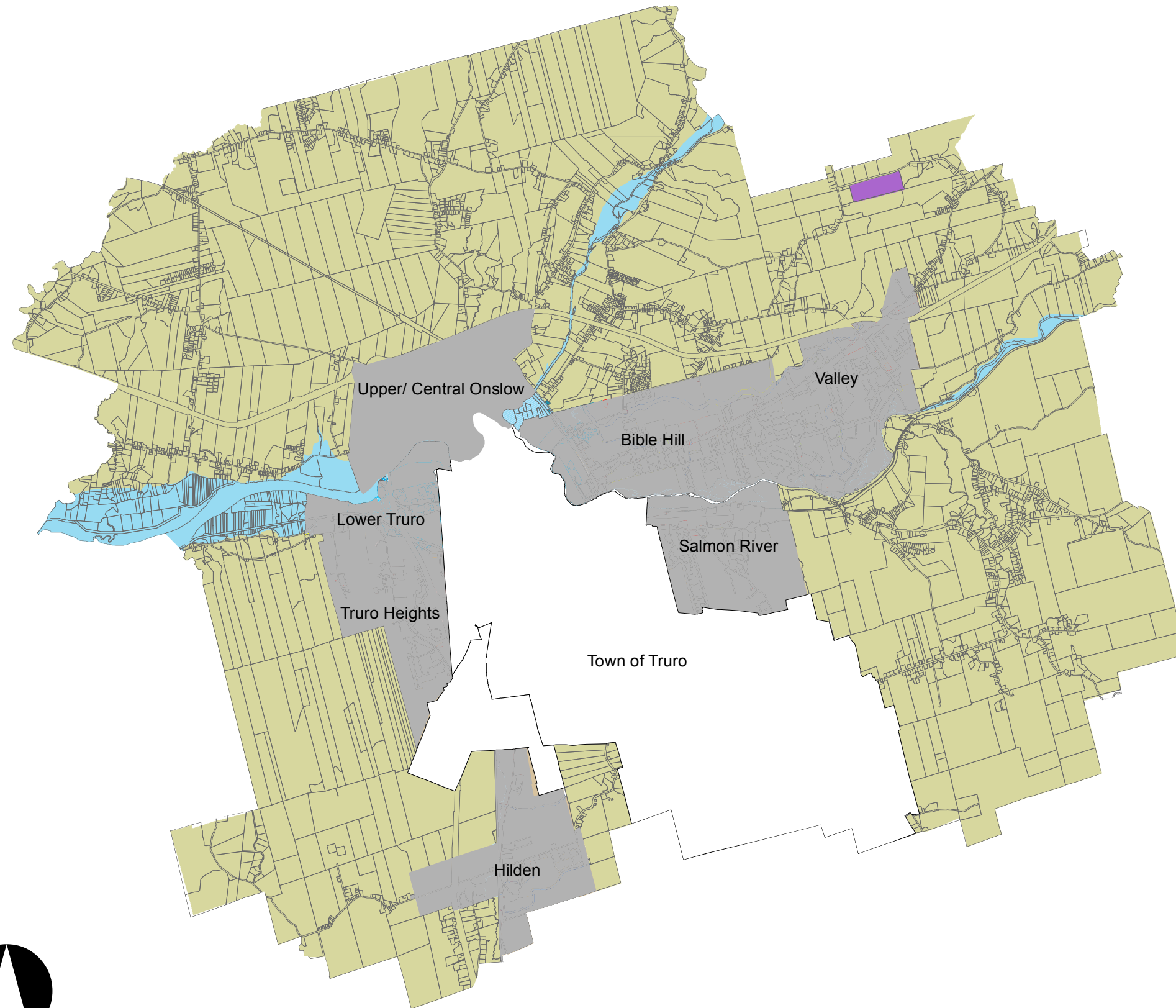
Current Version updated 2017





**Municipality of Colchester**




Dept. of Community Development  
1 Church Street Truro, Nova Scotia  
B2N 3Z5

**RURAL FRINGE AREA  
ZONING MAP  
SCHEDULE 3  
LAND USE BYLAW**



-  Town of Truro Boundary
-  Growth Centres

**Land Use Designations**

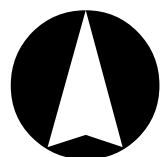
-  RG Flood Way 1:20
-  RG Rural General
-  RM Rural Industrial

**Notes**

Property information provided by  
Land Information Services of Service Noa Scotia  
and Municipal Relations

Maps Originally Generated with ArcGIS  
March 24, 2003

Current Version updated 2015











**Municipality of Colchester**

Dept. of Community Development  
1 Church Street Truro, Nova Scotia  
B2N 3Z5

# HILDEN ZONING MAP SCHEDULE 3 LAND USE BYLAW

## Land Use Designations

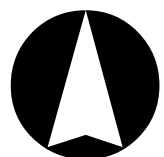
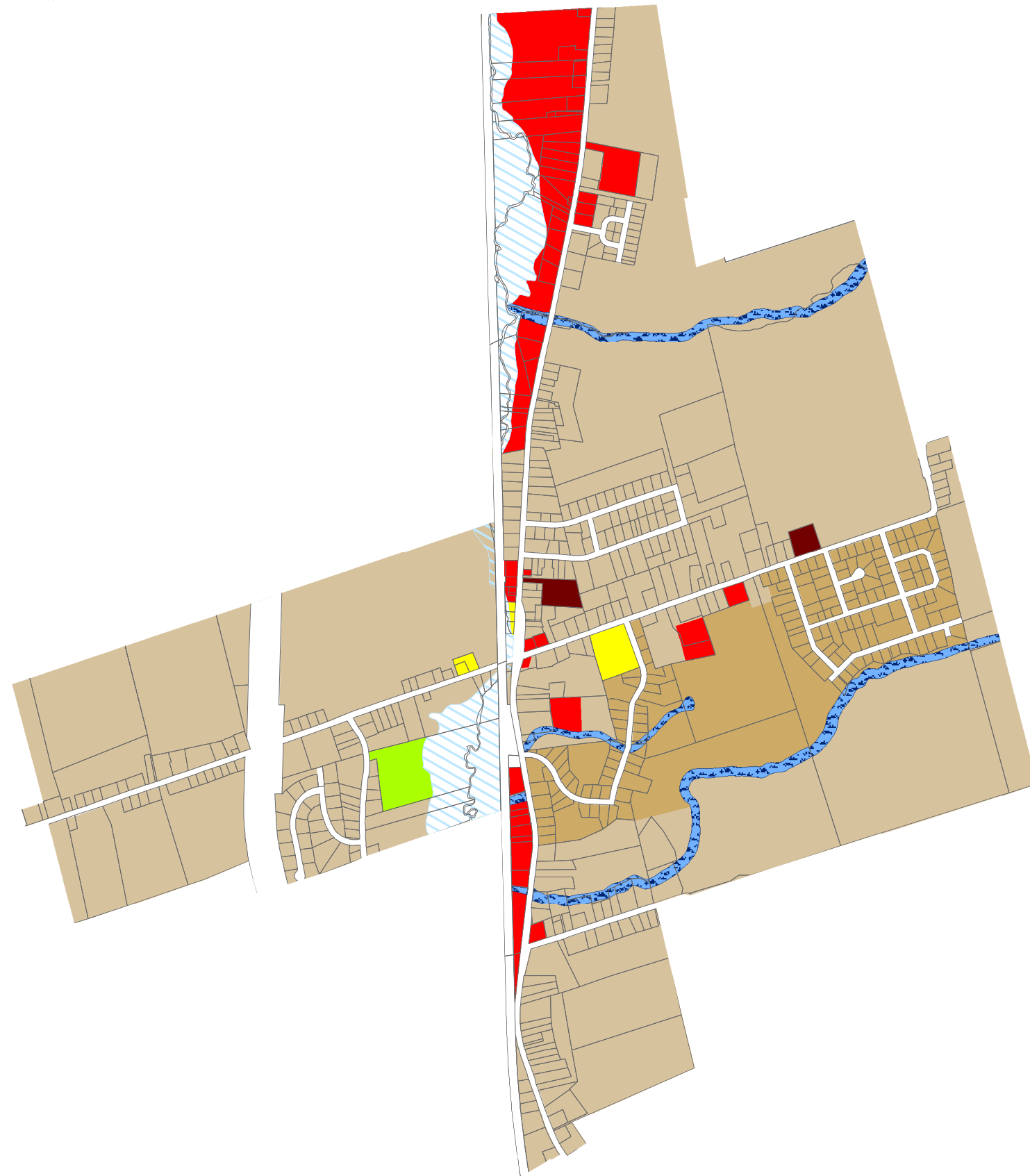
-  C-1 General Commercial
-  E-2 Flood Way 1:20 Year
-  E-5 Natural Drainage Ways
-  I Institutional
-  P Recreation/ Open Space
-  R-2 Double Unit Residential
-  R-2C Residential Double Unit Conversion
-  R-4 Multiple Unit - High

## Notes

Property information provided by  
Land Information Services of Service Noa Scotia  
and Municipal Relations

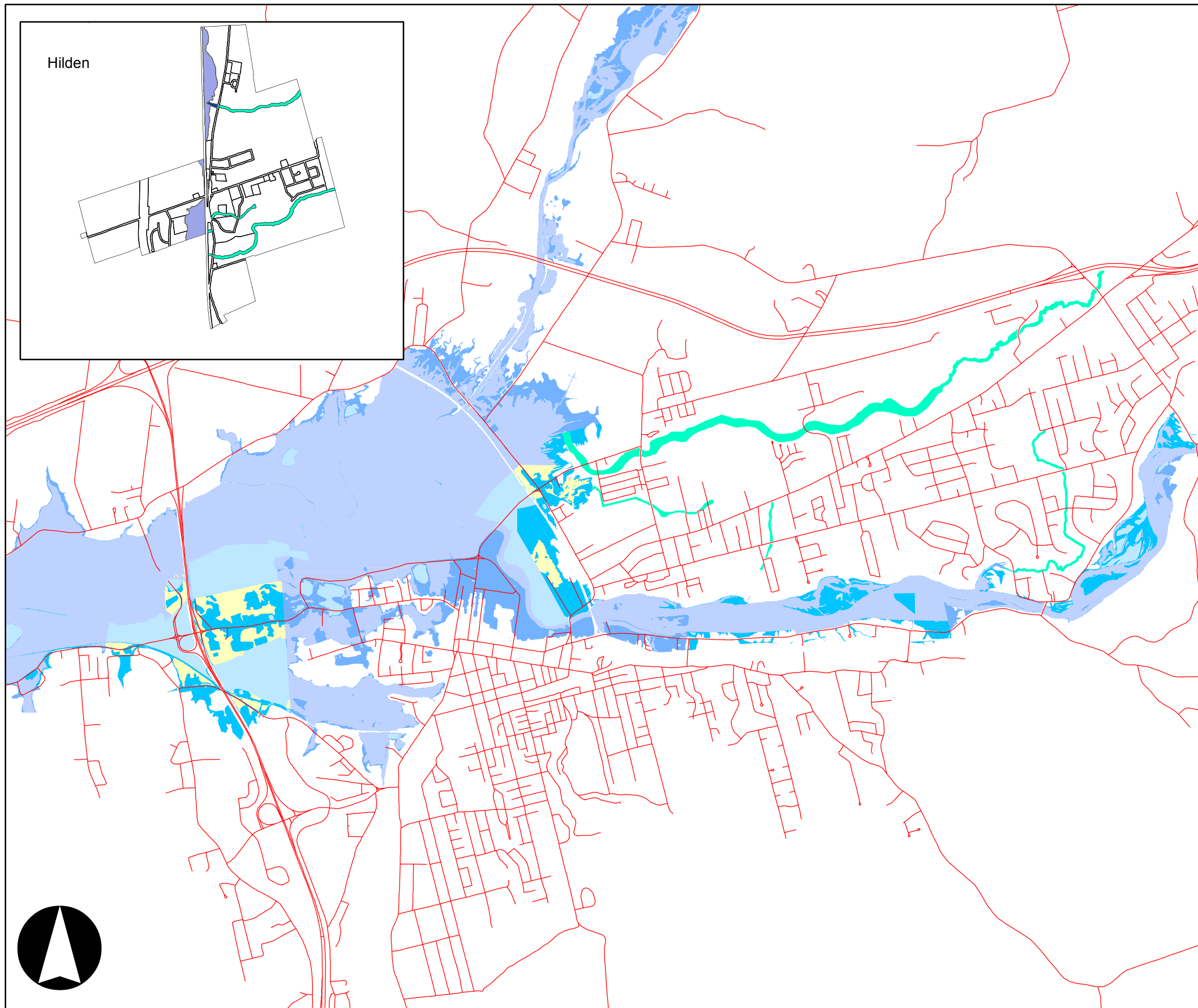
Maps Originally Generated with ArcGIS  
March 24, 2003

Current Version updated 2015



**Municipality of Colchester**

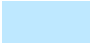




Dept. of Community Development  
1 Church Street Truro, Nova Scotia  
B2N 3Z5



# ZONING MAP CENTRAL COLCHESTER ENVIRONMENTAL CONDITIONS

## SCHEDULE 4 LAND USE BYLAW

### Environmental Conditions

-  E-1 Flow Way
-  E-2 Floodway 1:20 Year
-  E-3 Floodway 1:20 Year Modified
-  E-4 Floodway 1:100 Year
-  E-5 Natural Drainage Way

### Notes

Property information provided by  
Land Information Services of Service Noa Scotia  
and Municipal Relations

Maps Originally Generated with ArcGIS  
March 24, 2003

Current Version updated 2015



**Municipality of Colchester**

Dept. of Community Development  
1 Church Street Truro, Nova Scotia  
B2N 3Z5

# BIBLE HILL/ VALLEY ZONING MAP

## SCHEDULE 3 LAND USE BYLAW

### Land Use Designations

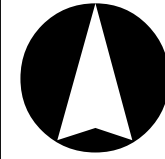
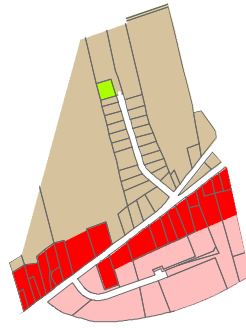
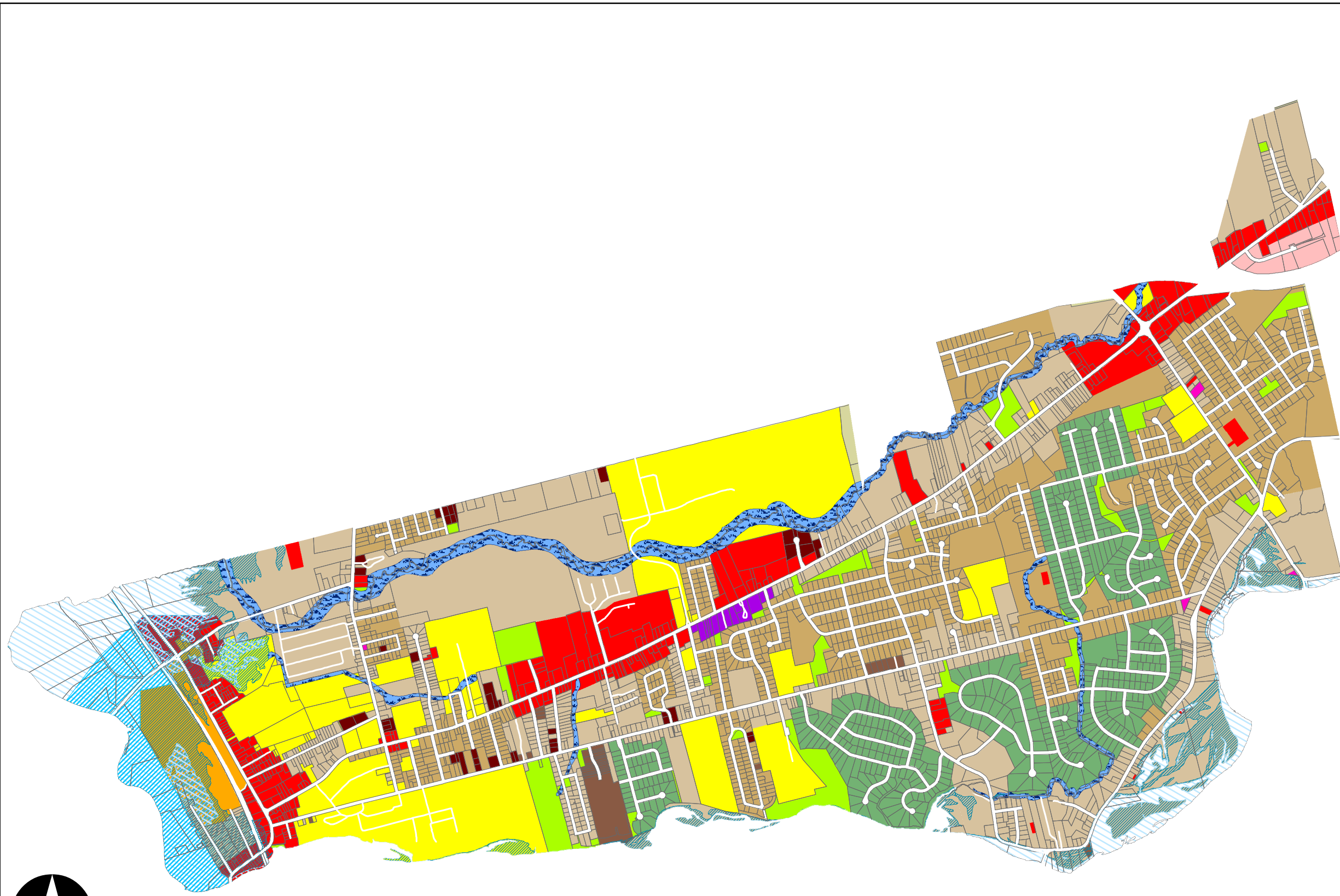
- C-1 General Commercial
- C-2 Highway Commercial
- C-3 Community Commercial
- C-4 Local Commercial
- E-1 Flood Way
- E-2 Flood Way 1:20 Year
- E-4 Flood Way 1:100
- I Institutional
- M Industrial
- P Recreation/ Open Space
- R-1 Single Unit Residential
- R-2 Double Unit Residential
- R-2C Residential Double Unit Conversion
- R-3 Multiple Unit - Medium
- R-4 Multiple Unit - High

**Notes**  
 Property information provided by  
 Land Information Services of Service Noa Scotia  
 and Municipal Relations

Maps Originally Generated with ArcGIS  
 March 24, 2003

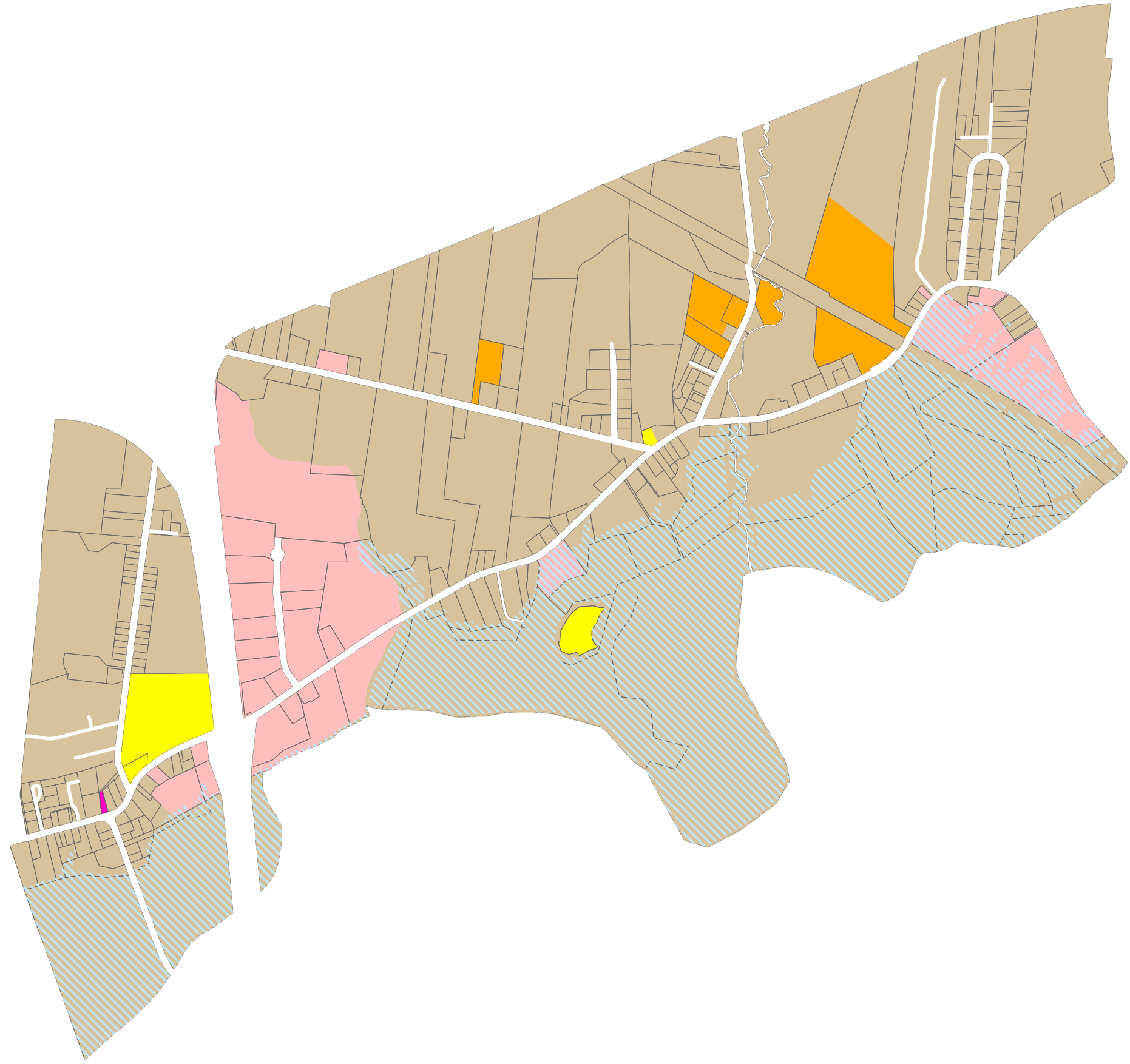
Current Version updated 2019

 **Municipality of Colchester**  
 Dept. of Community Development  
 1 Church Street Truro, Nova Scotia  
 B2N 3Z5









# Central/ Upper Onslow ZONING MAP

## SCHEDULE 3 LAND USE BYLAW



### Land Use Designations

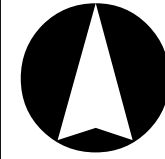
-  E-2 Flood Way 1:20 Year
-  C-2 Highway Commercial
-  C-4 Local Commercial
-  I Institutional
-  M Industrial
-  R-2 Double Unit Residential

### Notes

Property information provided by  
Land Information Services of Service Noa Scotia  
and Municipal Relations

Maps Originally Generated with ArcGIS  
March 24, 2003

Current Version updated 2015



**Municipality of Colchester**  
Dept. of Community Development  
1 Church Street Truro, Nova Scotia  
B2N 3Z5